

PROMAC®

10

Drill Press Säulenbohrmaschinen Perceuses à colonne

JD-32120

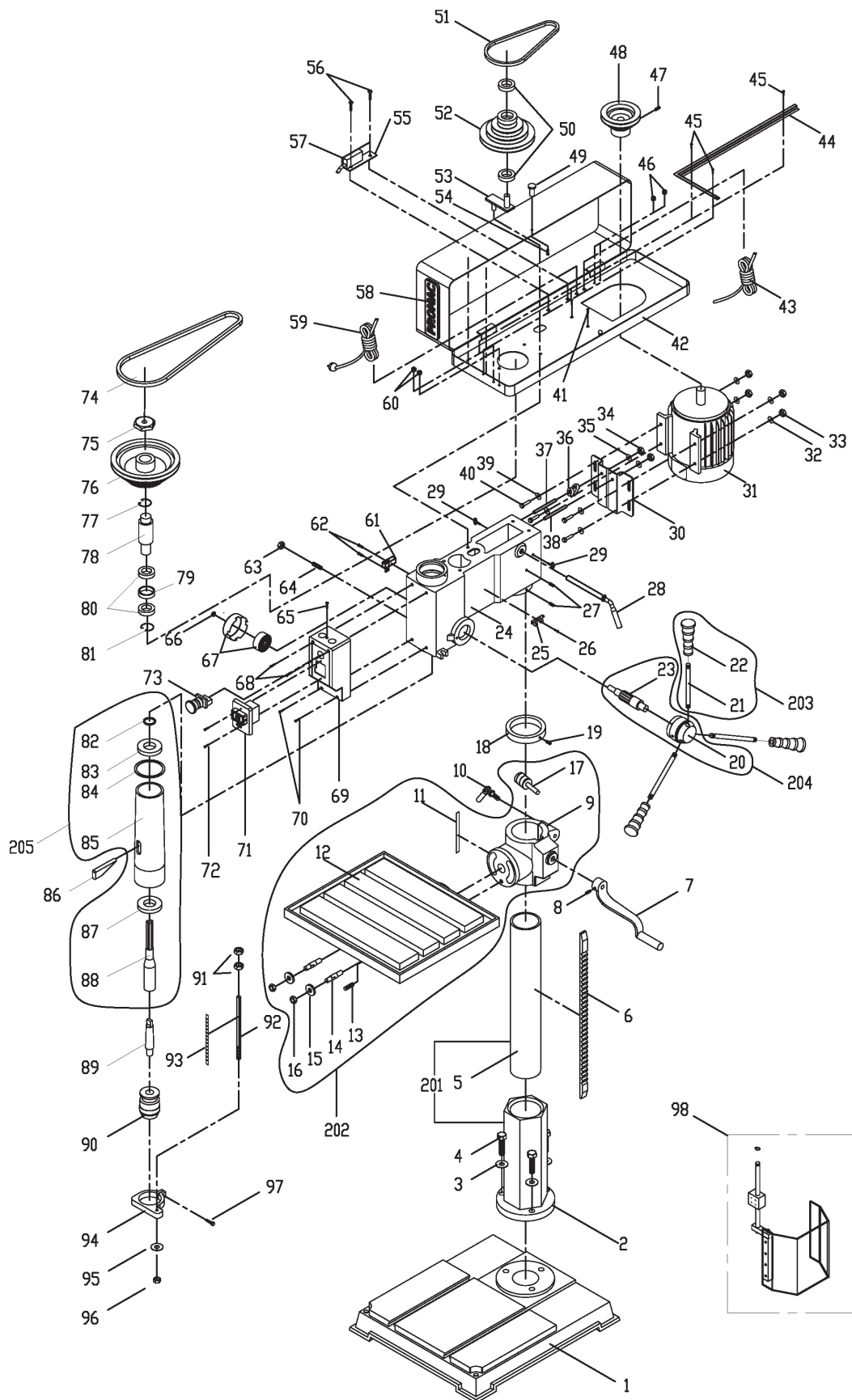


CE

Schweiz / Suisse
JPW (TOOL) AG
Tämperlistrasse 5

France
TOOL FRANCE SARL
9 Rue des Pyrénées, 91090

13.1.1 JD-32120 Drill Press – Exploded View



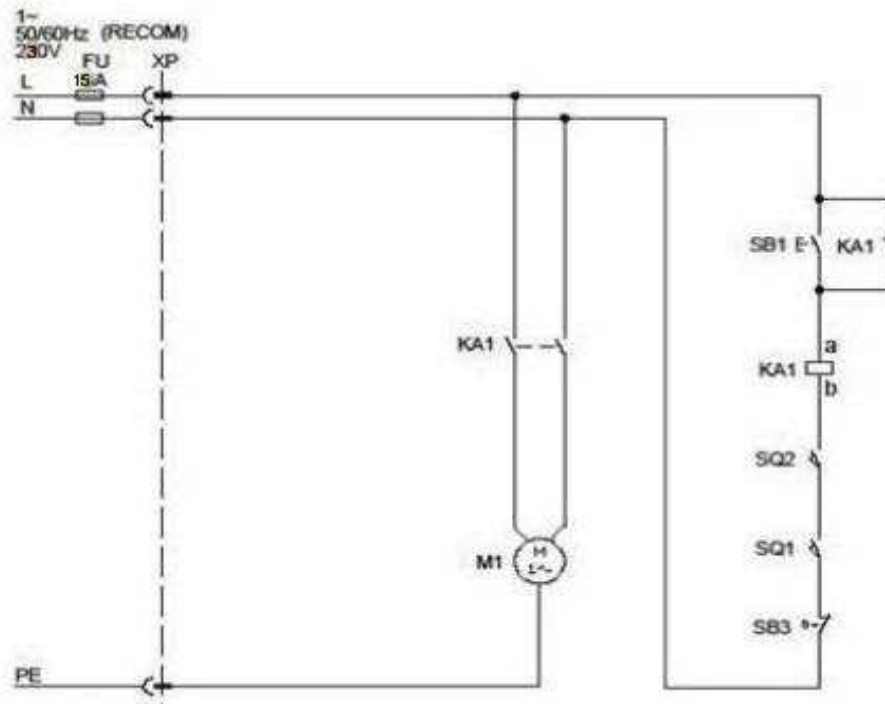
13.1.2 JD-32120 Drill Press – Parts List

Index No	Part No	Description	Size	Qty
1	IDP22-01	Base	575 x 500 x 85	1
201	IDP22-201	Column Assembly (#2,5)		1
2	IDP22-02	Column Holder		1
3	TS-0720111	Spring Washer	1/2"	3
4	TS-0070051	Hex Cap Screw	1/2" x 2 mm	3
5	IDP22-05	Column	Ø92	1
6	IDP22-06	Rack		1
7	IDP22-07	Table Crank		1
8	TS-0267041	Set Screw	1/4" x 3/8"	1
9	IDP22-09	Table Bracket		1
10	IDP22-10	Clamp Bolt	1/2" x 70 mm	1
11	IDP22-11	Tilt Angle Scale		1
12	IDP22-12	Work Table	475 x 413 x 41	1
202	IDP22-202	Table Assembly (#9, 11-16)		1
13	TS-0271031	Set Screw	3/8" x 3/8"	1
14	IDP22-14	Screw	9/16" x 1/2" x 62	2
15	TS-0680061	Flat Washer	1/2" x 34 x 5 mm	2
16	TS-0561051	Hex Nut	1/2"	2
17	IDP22-17	Worm Gear Assembly		1
18	IDP22-18	Rack Collar	Ø92	1
19	TS-0267021	Set Screw	1/4" x 1/4"	1
20	IDP22-20	Feed Hub		1
21	IDP22-21	Handle		3
22	IDP22-22	Knob		3
203	IDP17-203	Feed Handle Assembly (#21,22)		3
23	IDP22-23	Feed Pinion		1
204	IDP22-204	Feed Pinion Assembly (#20,23)		1
24	IDP22-24	Head Casting		1
25	IDP22-25	Chuck Key Fixture		1
26	5711571	Phillips Pan Head Screw	3/16" x 1/4"	1
27	TS-0271031	Set Screw	3/8" x 3/8"	2
28	IDP22-27	Tension Adjust Handle		1
29	IDP22-29	Thumb Screw	3/8" x 32	2
30	IDP22-30	Mounting Plate		1
31	PM-JD3212031	Motor	1-1/2HP, 230V, 50Hz, 4P	1
	PM-JD3212031-1	Motor Fan		1
	PM-JD3212031-2	Motor Fan Cover (not shown)		1
	PM-JD3212031-3	Junction Box		1
	PM-JD3212031-4	Junction Box Cover		1
32	TS-0680031	Flat Washer	5/16"	4
33	TS-0561021	Nut	5/16"	4
34	TS-0561051	Nut	1/2"	2
35	TS-0680061	Spring Washer	1/2"	2
36	IDP22-36	Shaft Lever		1
37	IDP22-37	Adjusting Bolt B		1
38	IDP22-38	Adjusting Bolt A		1
39	TS-0680031	Flat Washer	5/16"	4
40	TS-0051011	Hex Cap Screw	5/16" x 1"	4
41	TS-0207011	Screw With Washer	1/4" x 3/8"	4
42	IDP22-42	Pulley Cover		1
43	PM-JD3212043	Motor Cord		1
44	IDP22-44	Hold Down Strip		1
45	TS-2172001	Phillips Flat Head Screw	3/16" x 1/4"	1
46	IDP22-46	Wire fixed buckle		1
47	TS-1523011	Set Screw	M6 x 8mm	1
48	IDP22-48	Motor Pulley		1
49	IDP22-49	Knob		1
50	BB-6202	Ball Bearing	6202	2
51	VB-A27	V-Belt	A27	1

Index No	Part No	Description	Size	Qty
52	IDP22-52	Center Pulley		1
53	IDP22-53	Pivot Bracket		1
54	TS-081F031	Socket Head Butoon Screw	1/4" x 1/2"	1
55	PM-JD3212055	Limit Switch Plate		1
56	TS-2172001	Phillips Flat Head Screw	3/16" x 1/4"	2
57	PM-JD3212057	Pulley Cover Limit Switch		1
58	PROMAC 160	Name Plate (PROMAC)		1
59	PM-JD3212059	Power Cord	3G 1.0m/m2 250V/440V	1
60	PM-JD3212060	Wire Fixed Buckle		1
61	PM-JD3212061	Sinpdlr Grard Limit Switch		1
62	TS-2172021	Phillips Flat Head Screw	3/16" x 3/8"	1
63	TS-0561021	Nut	5/16"	1
64	TS-0270092	Screw	5/16" x 26mm	1
65	IDP17-94	Bush		1
66	TS-0561051	Nylon Nut	1/2"	1
67	IDP22-63	Spring Cover	1/2"	1
68	PM-JD3212068	Socket Head Butoon Screw	3/16" x 80mm	2
69	IDP22-65M	Switch Box		1
70	TS-1533062	Socket Head Butoon Screw	3/16" x 1-1/4mm	2
71	PM-JD3212071	NVR Switch		1
72	TS-2163022	Socket Head Butoon Screw	3/16" x 3/8"	2
73	PM-JD3212073	Emergency Switch		1
74	VB-A38	V-Belt	A38	1
75	TS-0561011	Nnt	1-1/4"	1
76	IDP22-71	Spindle Pulley		1
77	F006058	Retaining Ring		1
78	IDP22-73	Drive Taper		1
79	IDP22-74	Ball Spcer		1
80	BB-6007	Ball Bearing	6007	2
81	F006058	Retaining Ring		1
82	IDP22-76	Retaining Ring		1
83	BB-6005	Ball Bearing	6005	1
84	IDP22-78	Rubber Washer		1
85	IDP22-79	Quill		1
205	IDP22-205	Quill Assembly	Including (#82~85, #87 & #88)	1
86	IDP22-80	Wedge		1
87	BB-6206	Ball Bearing	6206	1
88	IDP22-82	Spindle	MT3	1
89	PM-JD3212089	Morse Taper Arbor		1
90	PM-JD3212090	Chuck Keyless		1
91	TS-0640132	Nut	5/8"	2
92	IDP22-90	Scale Bolt		1
93	IDP22-92	Scale		1
94	IDP22-86	Scale Frame		1
95	TS-2362101	Spring Washer	3/8"	1
96	TS-0610031	Hex Nut	3/8"	1
97	TS-1346072	Screw	1/4" x 1"	1
98	IDP17-92	Spindle Guard Assembly		1

14.0 Electrical Connections for JD-32120

Electrical circuit diagram



Item designation	Description & function	Maker	Type	Technical data	Making of conformity granted
XP	Plug for supply Single phase	LIAN DUNG	LT-32	10~16A , 250V	
	Supply cable Single phase	TIEN TUNG	H05W-F	3G 1.0m/m2 250V	VDE/ROHS
SB1	Start switch	KED V	JD3	230V/10A	CE TUV
SB3	Emergency-Stop switch	XINQUANG	KB2-BE102	10A	CE
SQ1	Micro switch	HIEHLY	VS 10N	250V/10A	UL
KA1	Magnetic Conductor	KEDU	JD3	AC230V/50HZ 12A	CE TUV
M1	Motor	K & K		AC230V/50Hz 1420rpm	CE TUV
SQ2	Micro switch	Zhejiang Tiande	CLS-103	250V/10A	CE

Environmental protection

Protect the environment.

Your appliance contains valuable materials which can be recovered or recycled. Please leave it at a specialized institution.



This symbol indicates separate collection for electrical and electronic equipment required under the WEEE Directive

Umweltschutz

Schützen Sie die Umwelt!

Ihr Gerät enthält mehrere unterschiedliche, wiederverwertbare Werkstoffe.
Bitte entsorgen Sie es nur an einer spezialisierten Entsorgungsstelle.



Dieses Symbol verweist auf die getrennte Sammlung von Elektro- und Elektronikgeräten, gemäß Forderung der WEEE-

Protection de l'environnement

Protégez l'environnement !

Votre appareil comprend plusieurs matières premières différentes et recyclables. Pour éliminer l'appareil usagé, veuillez l'apporter dans un centre spécialisé de recyclage des appareils électriques.



Ce symbole indique une collecte séparée des équipements électriques et électroniques conformément à la directive DEEE



Warranty / Garantie

TOOL FRANCE SARL guarantees that the supplied product(s) is/are free from material defects and manufacturing faults. This warranty does not cover any defects which are caused, either directly or indirectly, by incorrect use, carelessness, damage due to accidents, repairs or inadequate maintenance or cleaning as well as normal wear and tear.

Further details on warranty (e.g. warranty period) can be found in the General Terms and Conditions (GTC) that are an integral part of the contract.

These GTC may be viewed on the website of your dealer or sent to you upon request.

TOOL FRANCE SARL reserves the right to make changes to the product and accessories at any time.

TOOL FRANCE SARL garantiert, dass das/die von ihr gelieferte/n Produkt/e frei von Material- und Herstellungsfehlern ist. Diese Garantie deckt keinerlei Mängel, Schäden und Fehler ab, die - direkt oder indirekt - durch falsche oder nicht sachgemäße Verwendung, Fahrlässigkeit, Unfallschäden, Reparaturen oder unzureichende Wartungs- oder Reinigungsarbeiten sowie durch natürliche Abnutzung durch den Gebrauch verursacht werden. Weitere Einzelheiten zur Garantie können den allgemeinen Geschäftsbedingungen (AGB) entnommen werden. Diese können Ihnen auf Wunsch per Post oder Mail zugesendet werden. TOOL FRANCE SARL behält sich das Recht vor, jederzeit Änderungen am Produkt und am Zubehör vorzunehmen.

TOOL FRANCE SARL garantit que le/les produit(s)fourni(s) est/sont exempt(s) de défauts matériels et de défauts de fabrication.

Cette garantie ne couvre pas les défauts, dommages et défaillances causés, directement ou indirectement, par l'utilisation incorrecte ou inadéquate, la négligence, les dommages accidentels, la réparation, la maintenance ou le nettoyage incorrects et l'usure normale.

Vous pouvez trouver de plus amples détails sur la garantie dans les conditions générales (CG).

Les CG peuvent être envoyées sur demande par poste ou par e-mail .

TOOL FRANCE SARL se réserve le droit d'effectuer des changements sur le produit et les accessoires à tout moment.



TOOL FRANCE SARL
9 Rue des Pyrénées, 91090 LISSES, France w www.promac.fr